

Navigating Transition Services

Your Roadmap to Success



HOPE

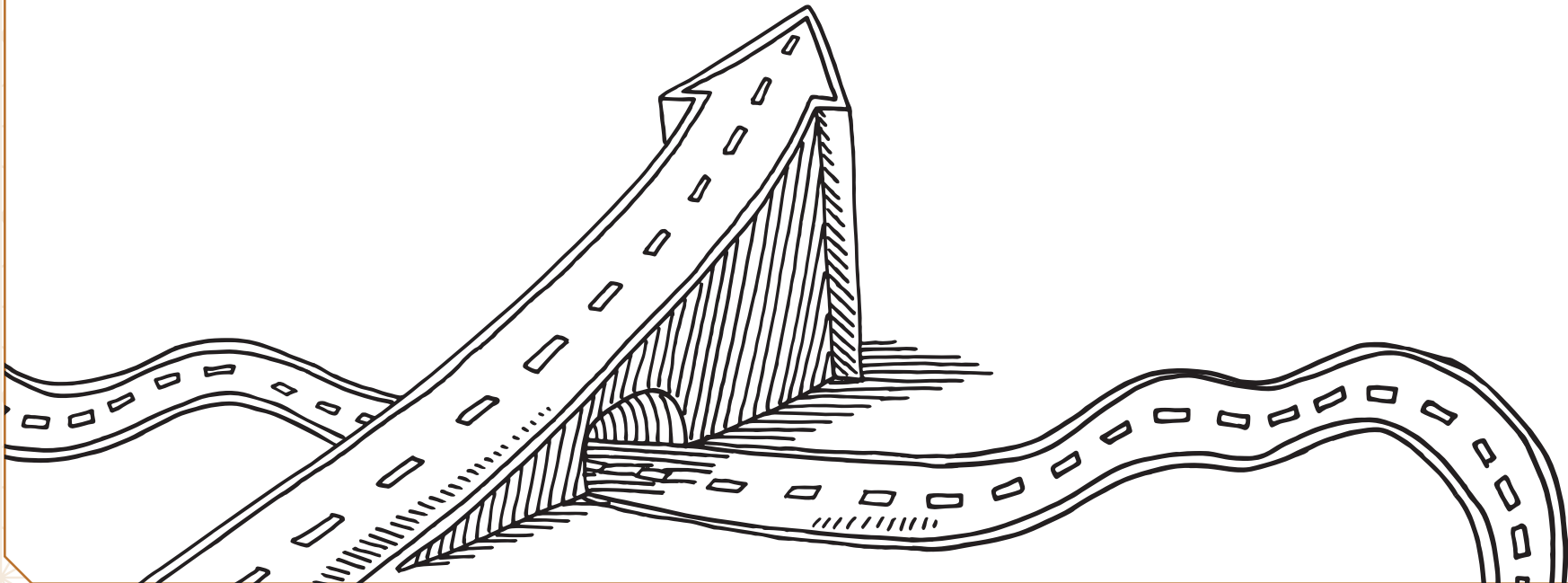


Preparing for life after high school

Don't be intimidated!

There's help for you and your family to succeed!

You Got This! We Got This!





Transition planning starts when you turn 14 or start high school.

You'll have a team in your corner!

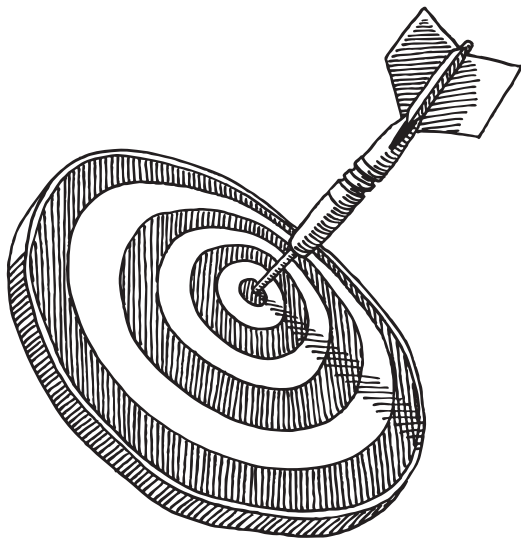
Together you will create a transition portion of your IEP.





Post-secondary plans can include:

- Continued Education
- Employment
- Community Experiences
- Independent Living
- + *more!*



**Set Goals,
Reach Targets!**



AGES 14-15

Learning

- Meet with your schools' transition coordinator.
- Research training and academic programs that interest you.

Working

- Sign up to volunteer/job shadow careers you may be interested in.
- Learn about programs at your local career and technical education center.
- Parents/guardians can contact the Office Vocational Rehabilitation to participate.

Living

- Parents/guardians can contact the Office of Intellectual Disabilities (OID) to register for services.

AGES 16-17

Learning

- Sign up for standardized tests if your goal is a trade or higher education.
- Apply for postsecondary schools.
- Don't forget the financial aid application process!

Working

- Research 5-10 jobs that may interest you.
- Apply for employment services through the Office of Vocational Rehabilitation (OVR).

Living

- Parents/guardians can contact the Office of Intellectual Disabilities (OID) to register for services.
- Learn about community activities you can get involved in.
- Apply for a driver's license or state ID card.
- If needed, apply for Supplemental Security Income (SSI) and Medical Assistance.

AGES 18-21

Learning

- If you are continuing education after high school, contact the office for disability services and support at the school and talk about accommodations you may need.
- Talk with your IEP team about how you can use your "Summary of Academic Achievement and Functional Performance" after high school.

Working

- Ask adult agencies to come to your IEP meetings to assist with job placement, training and accommodations.
- Ask your school and agency supporters in arranging on-the-job training and employment in your area of interest.

Living

- Verify your healthcare insurance coverage past age 18.
- If your plan is to live independently, talk with your family, school and agency supporters



About Hope Enterprises

Working with individuals with disABILITIES, from young adulthood through advanced age, families look to Hope Enterprises for engaging and special services that facilitate development and enhance the quality of life for each person we serve.



Our Services

Benefits Counseling

helping families make
informed decisions regarding
their employment and benefits

Employment Services

pre-employment
training to develop skills
employers value

Living Options

community homes and
lifesharing options provide 24-
hour care and companionship

Home & Community Support

safe, engaging activities fostering
community involvement and
independent living





Hope's Transition Planning Navigators can serve as invaluable members of the Transition Planning Team, by helping students and their parents/guardians work through the involved, complex process.

www.hopeability.org

(570) 326-3745